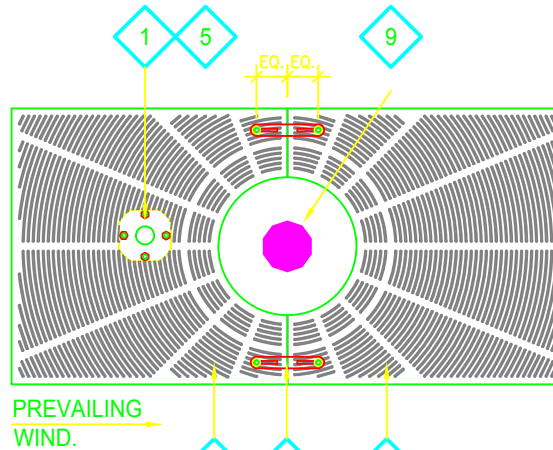


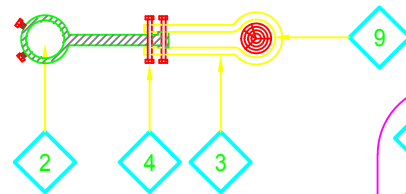
LEGEND

1. "MEGA GRATE STAKE".
1 1/4" DIAMETER SCHEDULE 40
STEEL PIPE. POWDER-COATED
BLACK.
2. STRAP BAR.
3/8" X 14-1/2" FLAT BAR. SECURED
WITH (2) SET BOLTS.
3. ADJUSTABLE VINYL STRAP.
MINIMUM 3/8" X 1-1/4" X 24" 90 DURO
FLEX PVC STRAP WITH UV
INHIBITORS.
4. (2) 1/4" X 1-3/4" BOLTS, WASHERS
AND NUTS.
5. STAKE PLATE.
6. SECURE TO GRATE WITH (4) 5/16"
CARRIAGE BOLTS, WASHERS AND
NUTS.
7. TREE GRATE.
A. HALF 1
B. HALF 2
8. STEEL STRAP. 6" x 1-1/5" x 3/8".
SECURE TO BOTTOM SIDE OF TREE
GRATE WITH (2) 5/16" CARRIAGE
BOLTS, WASHERS AND NUTS.
9. TREE.

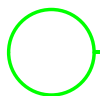
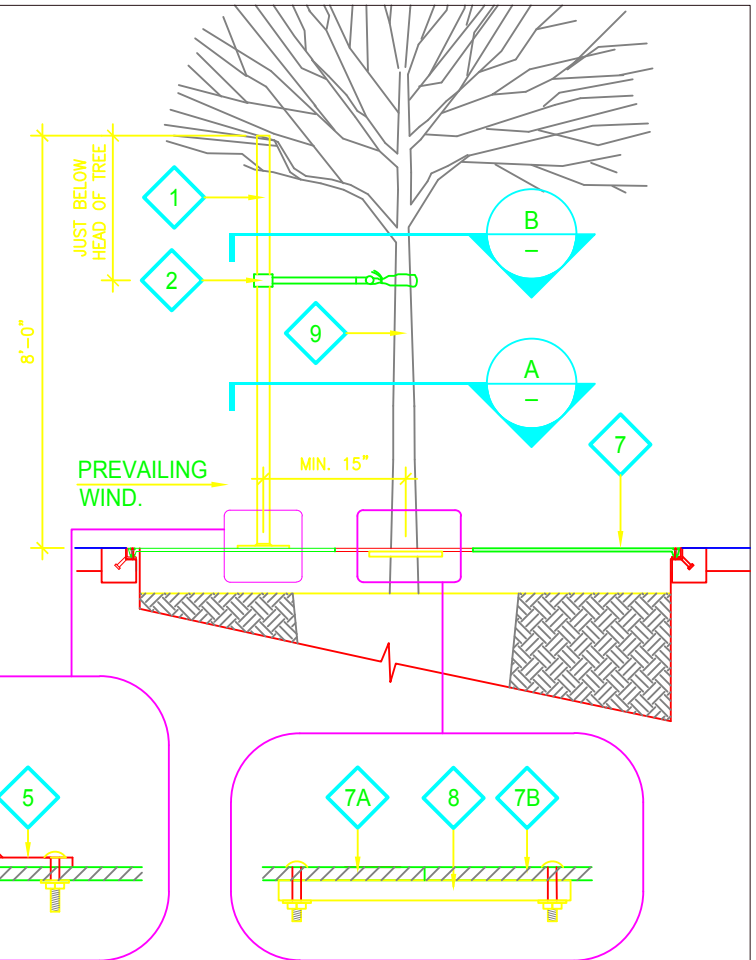
DETAIL IS FOR REFERENCE ONLY. SEE
MANUFACTURER'S DETAILS AND
SPECIFICATIONS. J.R. PARTNERS, (209)
634-7791, SALES@JRPARTNERS.CO.COM,
WWW.TREESTAKE.COM



PLAN A



PLAN B



"MEGA GRATE STAKE" BY J.R. PARTNERS

SCALE: NTS

"MEGA GRATE STAKE" BY J.R. PARTNERS .dwg