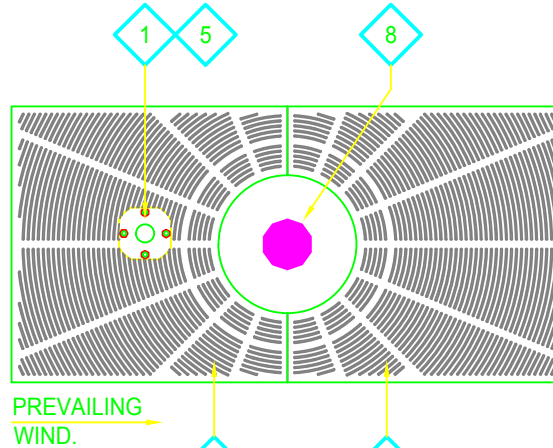


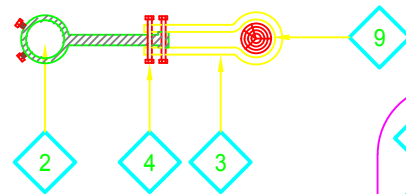
LEGEND

1. "GRATE STAKE".
3/4" DIAMETER SCHEDULE 40 STEEL PIPE. POWDER-COATED BLACK.
2. STRAP BAR.
.1865" X 12" FLAT BAR.
SECURED WITH (2) SET BOLTS.
3. ADJUSTABLE VINYL STRAP.
MINIMUM 1/4" X 1" X 18"
90 DURO FLEX PVC STRAP WITH UV INHIBITORS.
4. (2) 1/4" X 1-1/4" BOLTS, WASHERS AND NUTS.
5. STAKE PLATE.
6. SECURE TO GRATE WITH (4) 5/16" CARRIAGE BOLTS, WASHERS AND NUTS.
7. TREE GRATE.
A. HALF 1
B. HALF 2
8. TREE.

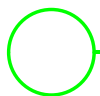
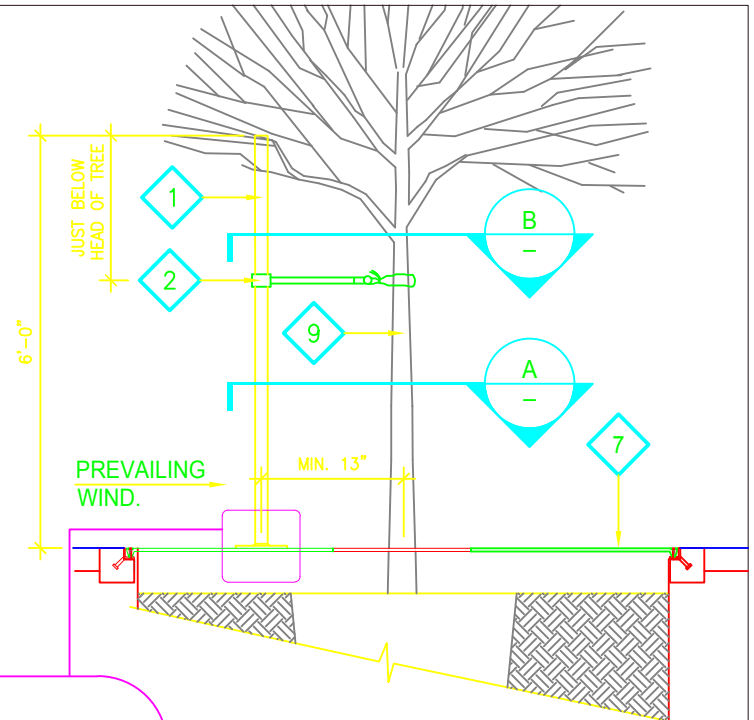
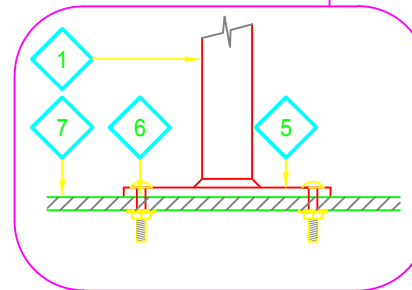
DETAIL IS FOR REFERENCE ONLY. SEE MANUFACTURER'S DETAILS AND SPECIFICATIONS. J.R. PARTNERS, (209) 634-7791, SALES@JRPARTNERS.CO.COM, WWW.TREESTAKE.COM



PLAN A



PLAN B



"GRATE STAKE" BY J.R. PARTNERS

SCALE: NTS

"GRATE STAKE" BY J.R. PARTNERS .dwg