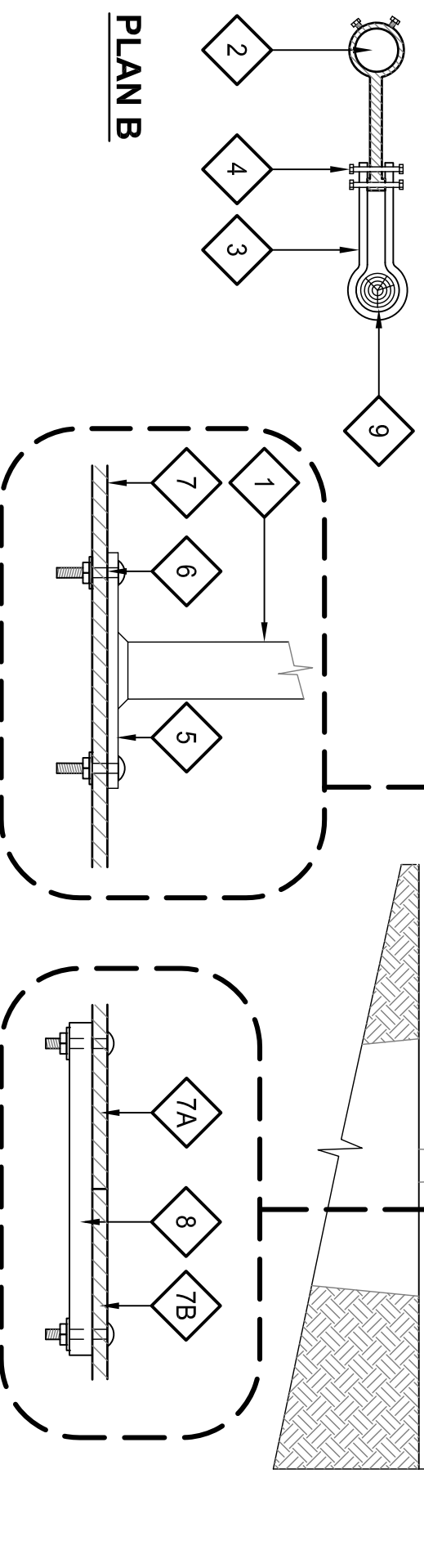
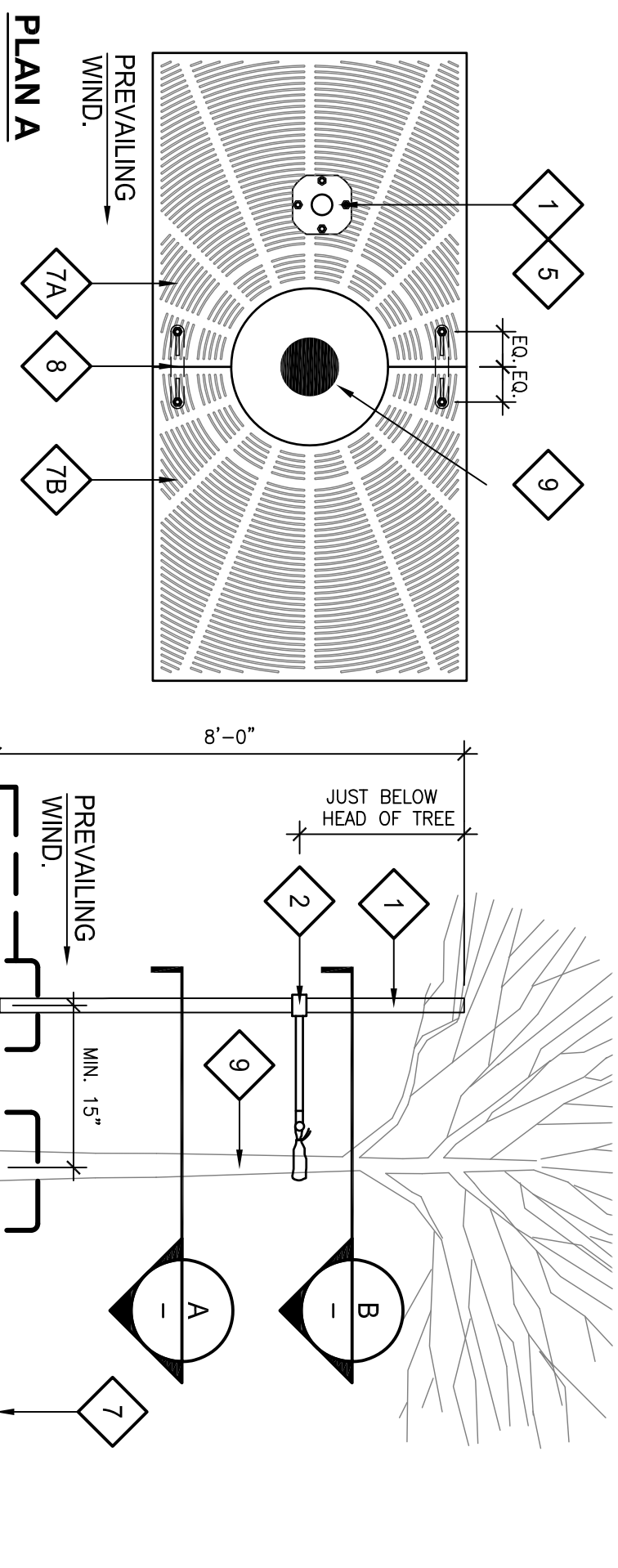


LEGEND

1. "MEGA GRATE STAKE".
1 1/4" DIAMETER SCHEDULE 40 STEEL PIPE. POWDER-COATED BLACK.
2. STRAP BAR.
3/8" X 14-1/2" FLAT BAR. SECURED WITH (2) SET BOLTS.
3. ADJUSTABLE VINYL STRAP.
MINIMUM 3/8" X 1-1/4" X 24" 90 DURO FLEX PVC STRAP WITH UV INHIBITORS.
4. (2) 1/4" X 1-3/4" BOLTS, WASHERS AND NUTS.
5. STAKE PLATE.
SECURE TO GRATE WITH (4) 5/16" CARRIAGE BOLTS, WASHERS AND NUTS.
6. SECURE TO GRATE WITH (4) 5/16" CARRIAGE BOLTS, WASHERS AND NUTS.
7. TREE GRATE.
A. HALF 1
B. HALF 2
8. STEEL STRAP. 6" x 1-1/5" x 3/8".
SECURE TO BOTTOM SIDE OF TREE GRATE WITH (2) 5/16" CARRIAGE BOLTS, WASHERS AND NUTS.
9. TREE.

DETAIL IS FOR REFERENCE ONLY. SEE MANUFACTURER'S DETAILS AND SPECIFICATIONS. J.R. PARTNERS, 1616 FREEDOM COURT, TURLOCK, CA. 95382. (888) 333-3090



"MEGA GRATE STAKE" BY J.R. PARTNERS

SCALE: NTS

"MEGA GRATE STAKE" BY J.R. PARTNERS .dwg