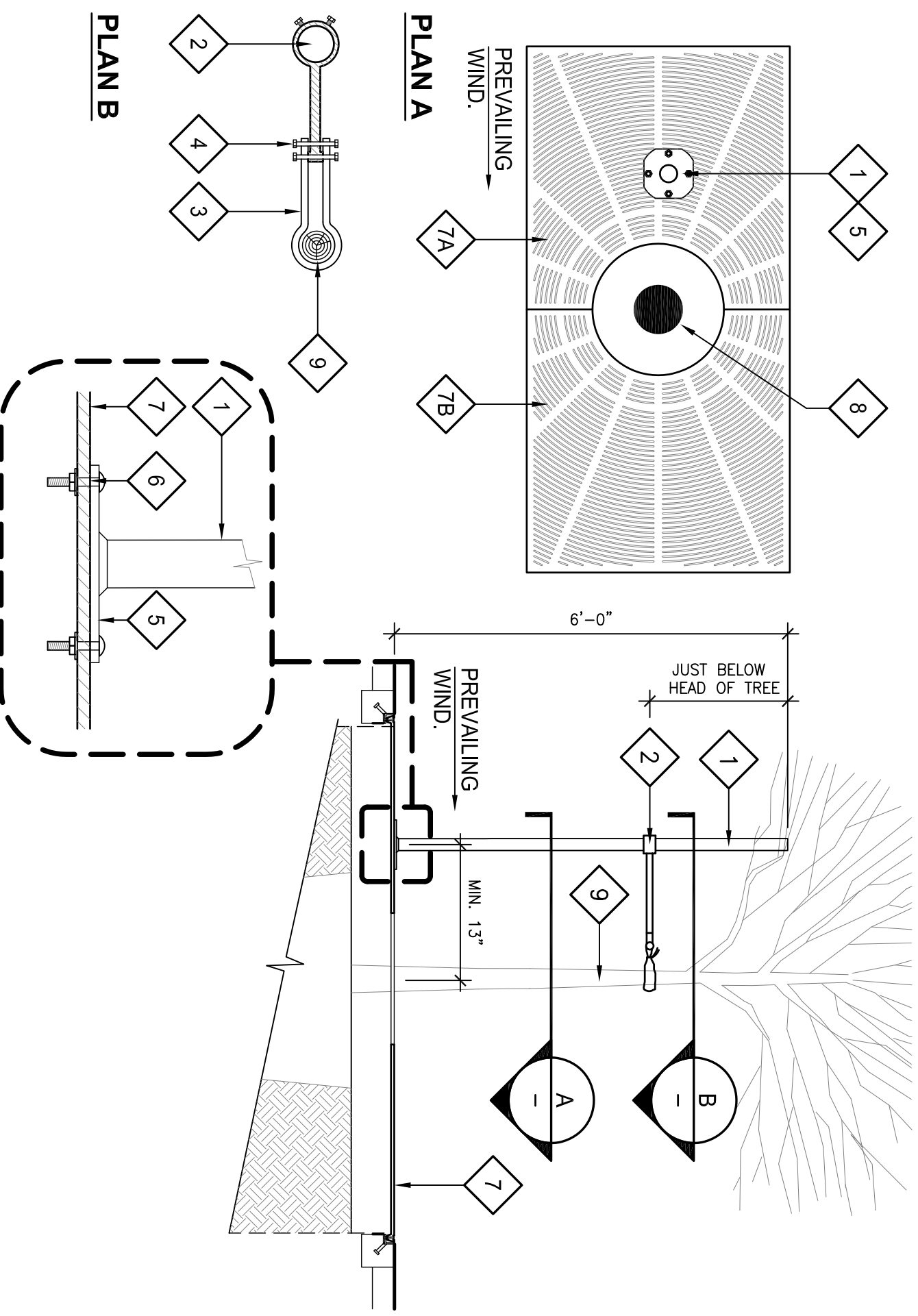
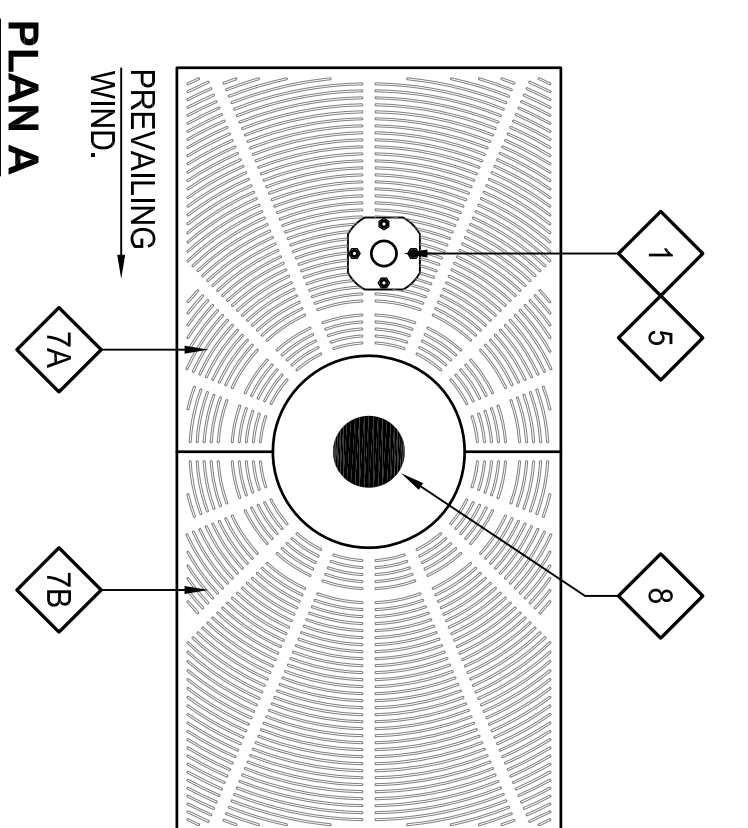


**LEGEND**

1. "GRATE STAKE".  
3/4" DIAMETER SCHEDULE 40 STEEL PIPE. POWDER-COATED BLACK.
2. STRAP BAR.  
.1865" X 12" FLAT BAR.  
SECURED WITH (2) SET BOLTS.
3. ADJUSTABLE VINYL STRAP.  
MINIMUM 1/4" X 1" X 18"
4. 90 DURO FLEX PVC STRAP WITH UV INHIBITORS.
4. (2) 1/4" X 1-1/4" BOLTS, WASHERS AND NUTS.
5. STAKE PLATE.
6. SECURE TO GRATE WITH (4) 5/16" CARRIAGE BOLTS, WASHERS AND NUTS.
7. TREE GRATE.  
A. HALF 1  
B. HALF 2
8. TREE.
9. TREE.

DETAIL IS FOR REFERENCE ONLY. SEE MANUFACTURER'S DETAILS AND SPECIFICATIONS. J.R. PARTNERS, 1616 FREEDOM COURT, TURLOCK, CA. 95382. (888) 333-3090



**"GRATE STAKE" BY J.R. PARTNERS**

SCALE: NTS

"GRATE STAKE" BY J.R. PARTNERS .dwg