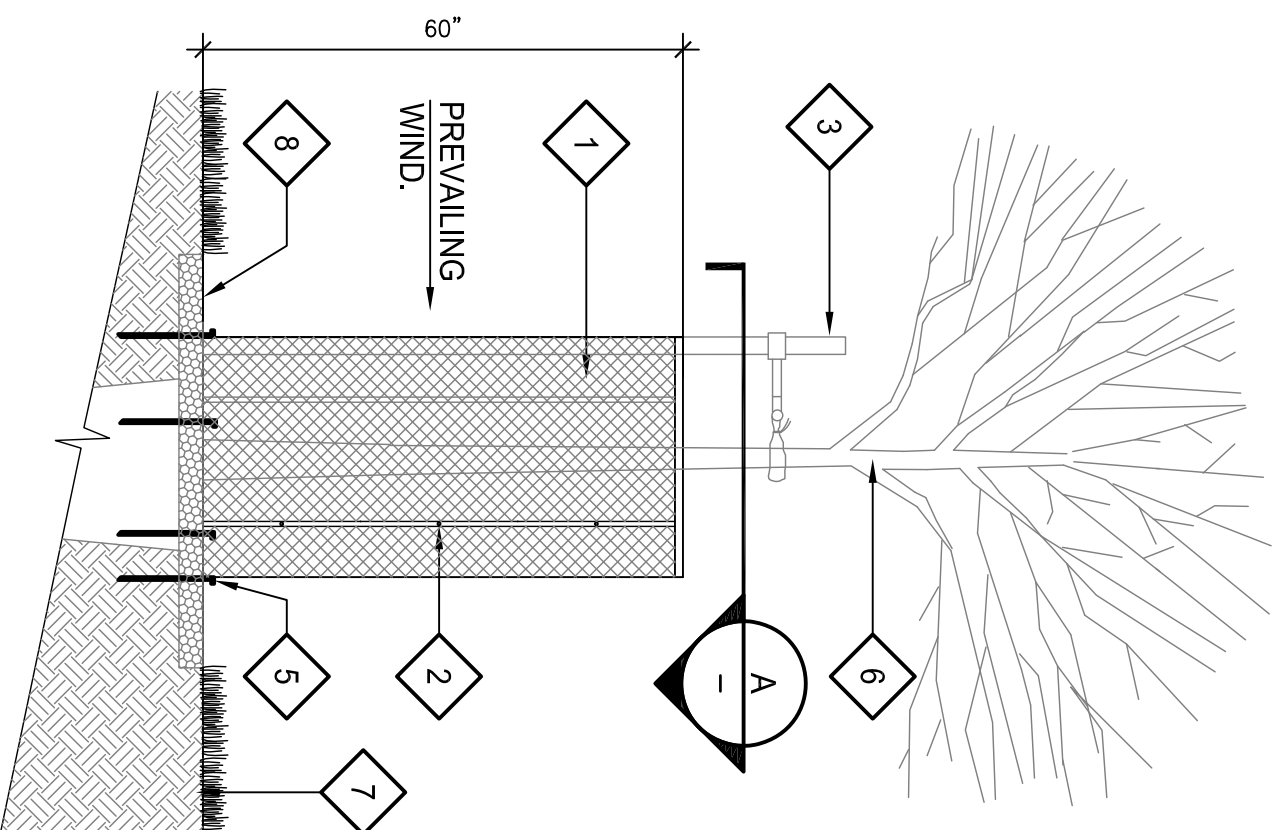


**SECTION**

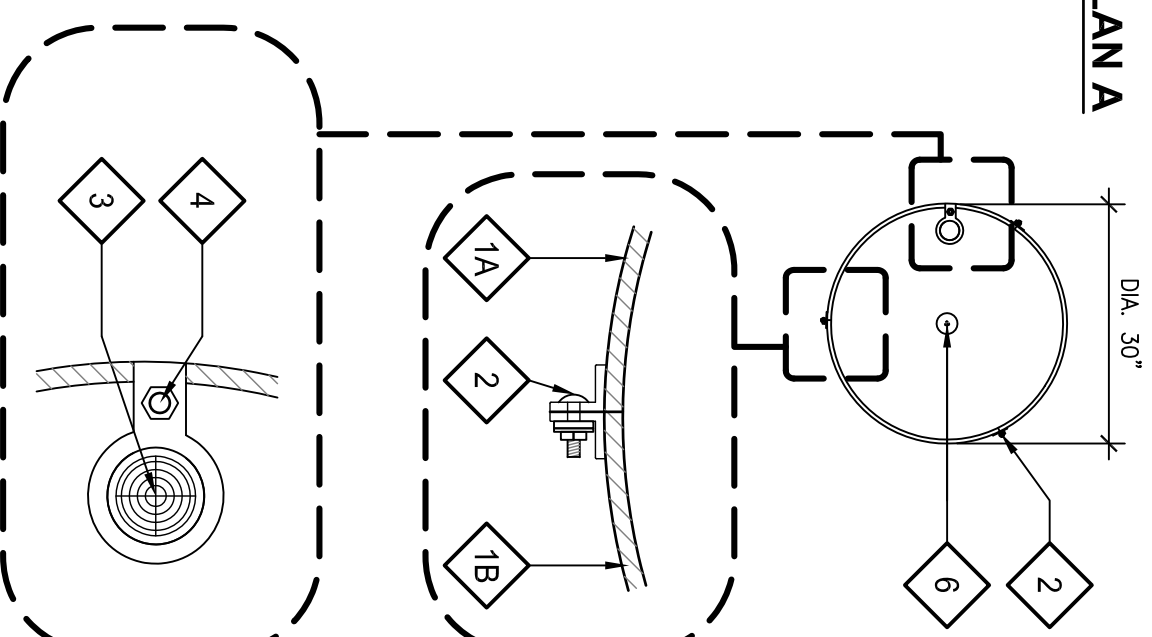
**LEGEND**

1. (3) PANELS, POWDER COATED 20 GAUGE, STEEL PERFORATED METAL, WINDSOR DESIGN WITH 3/4" X 3/4" X 1/8" ANGLE IRON, COLOR DARK GREEN
  - A. PANEL 1
  - B. PANEL 2
2. (9) BOLTS 1/4" X 3/4" LONG WITH NUTS USED TO ASSEMBLE (3) PANELS TOGETHER.
3. R2 STAKE RECOMMENDED FOR ADDITIONAL SUPPORT. NOT INCLUDED.
4. (1) BOLT, 1/4" X 3/4" WITH NUT FOR ATTACHMENT OF STABILIZER DEVICE WITH (2) 5/16" SET BOLTS.
5. (6) 3/8" X 12" ANCHORING STAKES, TWO PER PANEL.
6. TREE.
7. ADJACENT PLANTING AREA.
8. TREE WELL WITH MULCH COVER.

DETAIL IS FOR REFERENCE ONLY. SEE MANUFACTURER'S DETAILS AND SPECIFICATIONS. J.R. PARTNERS, 1616 FREEDOM COURT, TURLOCK, CA. 95382. (888) 333-3090



**PLAN A**



"OPEN SPACE TREE GUARD" BY J.R. PARTNERS

SCALE: NTS

"OPEN SPACE TREE GUARD" BY J.R. PARTNERS .dwg